

Information and/or specifications published here are current as of the date of publication of this document. Tridium, Inc. reserves the right to change or modify specifications without prior notice. The latest product specifications can be found by contacting our corporate headquarters, Richmond, Virginia. Products or features contained herein are covered by one or more U.S. or foreign patents. This document may be copied by parties who are authorized to distribute Tridium products in connection with distribution of those products, subject to the contracts that authorize such distribution. It may not otherwise, in whole or in part, be copied, photocopied, reproduced, translated, or reduced to any electronic medium or machine-readable form without prior written consent from Tridium, Inc. Complete Confidentiality, Trademark, Copyright and Patent notifications can be found at: <http://www.tridium.com/galleries/SignUp/Confidentiality.pdf>. © 2013 Tridium, Inc.

JACE, Niagara Framework, Niagara AX Framework and the Sedona Framework are trademarks of Tridium, Inc.

## NiagaraAX Station Migration Tool

NiagaraAX 3.5 (and earlier) stations containing SedonaNetworks are not compatible with NiagaraAX 3.6 or later stations running Sedona Framework TXS1.1, or with NiagaraAX 3.7 or later stations running Sedona Framework TXS 1.2. The NiagaraAX Station Migration Tool is an offline tool used to convert these stations so that they are compatible with these platforms.

This document describes the NiagaraAX Station Migration Tool and includes the following sections:

- “About Station Migration” on page 1
- “Migrating a station” on page 1
- “Document change log” on page 3

### About Station Migration

The station to be migrated must meet the following prerequisites:

- There is only one network (SedonaNetwork) in the station.
- There is only one type of SedonaDevice under the SedonaNetwork, either Ethernet/WiFi or wireless Jennic-based.

**Note:** *If you have station with a SedonaNetwork that has both Ethernet/WiFi and wireless Jennic-based device types under it, you cannot use the tool to migrate that station. You should manually recreate a separate station for each of those device types.*

The migration tool runs in the AX-3.6 or later Workbench console window. When the migration command executes, the migration tool inspects the station to determine which network type is required for the new migrated station. Starting in the Sedona TXS-1.1 release, a separate network type is used for each device type. The SedonaNetwork type, with SedonaDevices, is used for Ethernet/WiFi devices only. The SedonaJen6lpNetwork type, with SedonaJen6lpDevices, is used for wireless Jennic-based devices only, and the “Jennic6LowpanBridgeService” is no longer used. Once the network type is determined, the migration tool creates a backup of the station database named “preMigrate\_config.bog”, and a new migrated station database named, “config.bog”.

**Note:** *You should migrate the AX-3.5 (or earlier) station before upgrading the JACE to AX-3.6 or AX-3.7. Then have that converted station ready to reinstall when upgrading the JACE via the Commissioning Wizard.*

### Migrating a station

Use the NiagaraAX Station Migration Tool to migrate a station from Niagara 3.5 or earlier to Niagara 3.6 or later.

- Step 1 Copy the station database (config.bog) from the AX-3.5 (or earlier) JACE, and paste it into the station's folder in the AX-3.7 or later Workbench enabled for Sedona Framework TXS 1.2, or AX-3.6 or later Workbench enabled for Sedona Framework TXS 1.1.
- Step 2 From that Workbench computer, open a Niagara console window.  
For example, from Windows: Start > All Programs > Niagara AX 3.6.n > Console  
Or, from the normal Workbench menu: Window > Console
- Step 3 Enter the following command:  
`nre sedonanet:com.tridium.sedonanet.migrate.MigrateBog [path\to\config.bog]`  
For example, a station folder “SedJenTest” with config.bog is copied under !stations\.

From the default Niagara console prompt, the following command is entered:

```
nre sedonanet:com.tridium.sedonanet.migrate.MigrateBog
stations\SedJenTest\config.bog.
```

- Step 4 The command executes and the new migrated `config.bog` file will be in the same location. The original `config.bog` file is renamed “`preMigrate_config.bog`”, and is also in the same location.

Figure 1 shows the NiagaraAX Station Migration Tool being used in the Niagara console window, and the migration results in the Workbench Nav tree (under “My File System”).

**Figure 1** Running NiagaraAX Station Migration Tool in Niagara Console

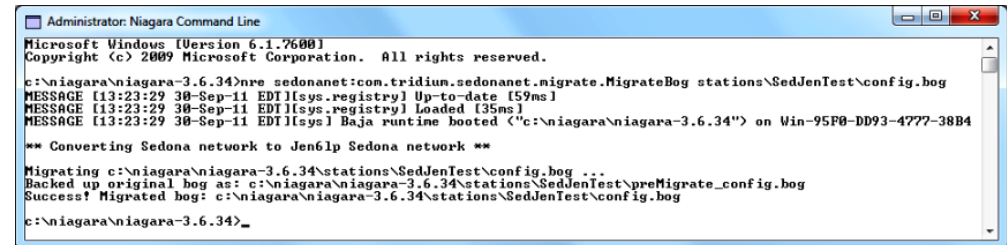


Figure 2 below shows the migration results in the Workbench Nav tree (under “My File System”).

**Figure 2** Migration Results in Workbench Nav Tree

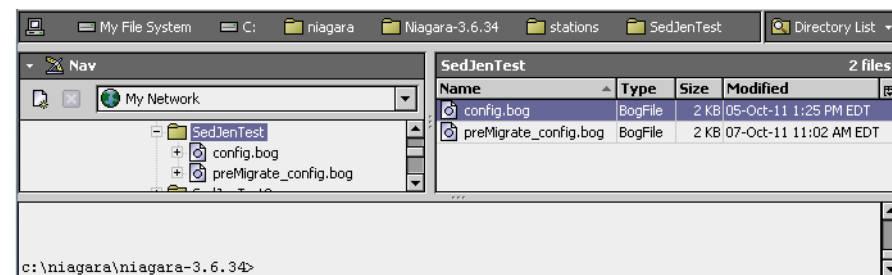
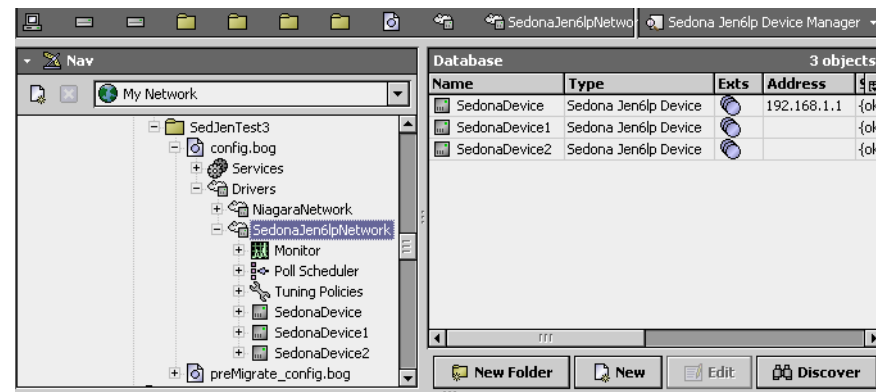


Figure 3 below shows the migration results in the Workbench Nav tree (under “My File System”) for the SedonaJen6lpNetwork type (for wireless Jennic-based devices).

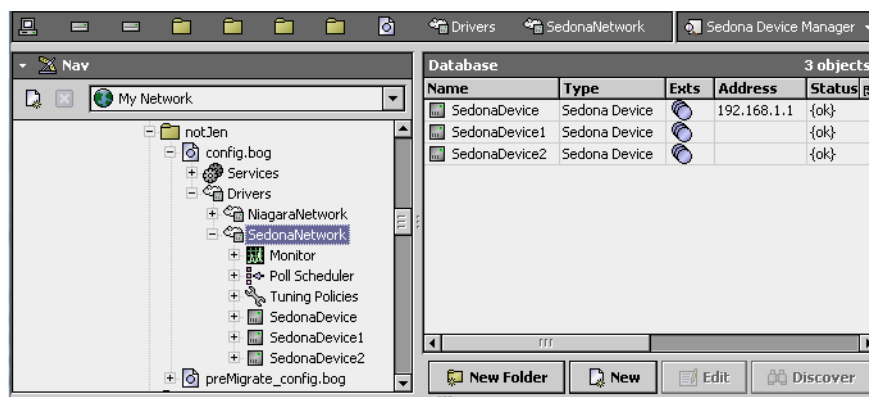
**Figure 3** Migration Results for Station with SedonaJen6lpNetwork for Wireless Jennic-based Devices



**Note:** If the migrated station has the SedonaJen6lpNetwork type, after reinstalling the station use the NiagaraAX platform Software Manager to remove the “Jennic” and “platJennic” software modules since they are no longer needed.

Figure 4 below shows the migration results in the Workbench Nav tree (under “My File System”) for the SedonaNetwork type (for Ethernet/WiFi devices).

**Figure 4** Migration Results for Station with SedonaNetwork for Ethernet/WiFi Devices



After migrating the station, run the platform Commissioning Wizard (from the Niagara Workbench enabled for Sedona Framework TXS) to upgrade the JACE, and select the “Install Station” step to reinstall the converted station. For details on using the platform tools, refer to the *NiagaraAX Platform Guide*.

## Document change log

Updates (changes/additions) to this *NiagaraAX Station Migration Tool—Engineering Notes* document are listed below.

- Updated: January 14, 2013  
Minor changes to mention Sedona Framework TXS 1.2 (requiring AX-3.7 or later). Note that screen captures were not updated to reflect a station running AX-3.7 with Sedona TXS 1.2 modules; however, all concepts and procedures in this document still apply.
- Publication: November 9, 2011  
Initial document.

